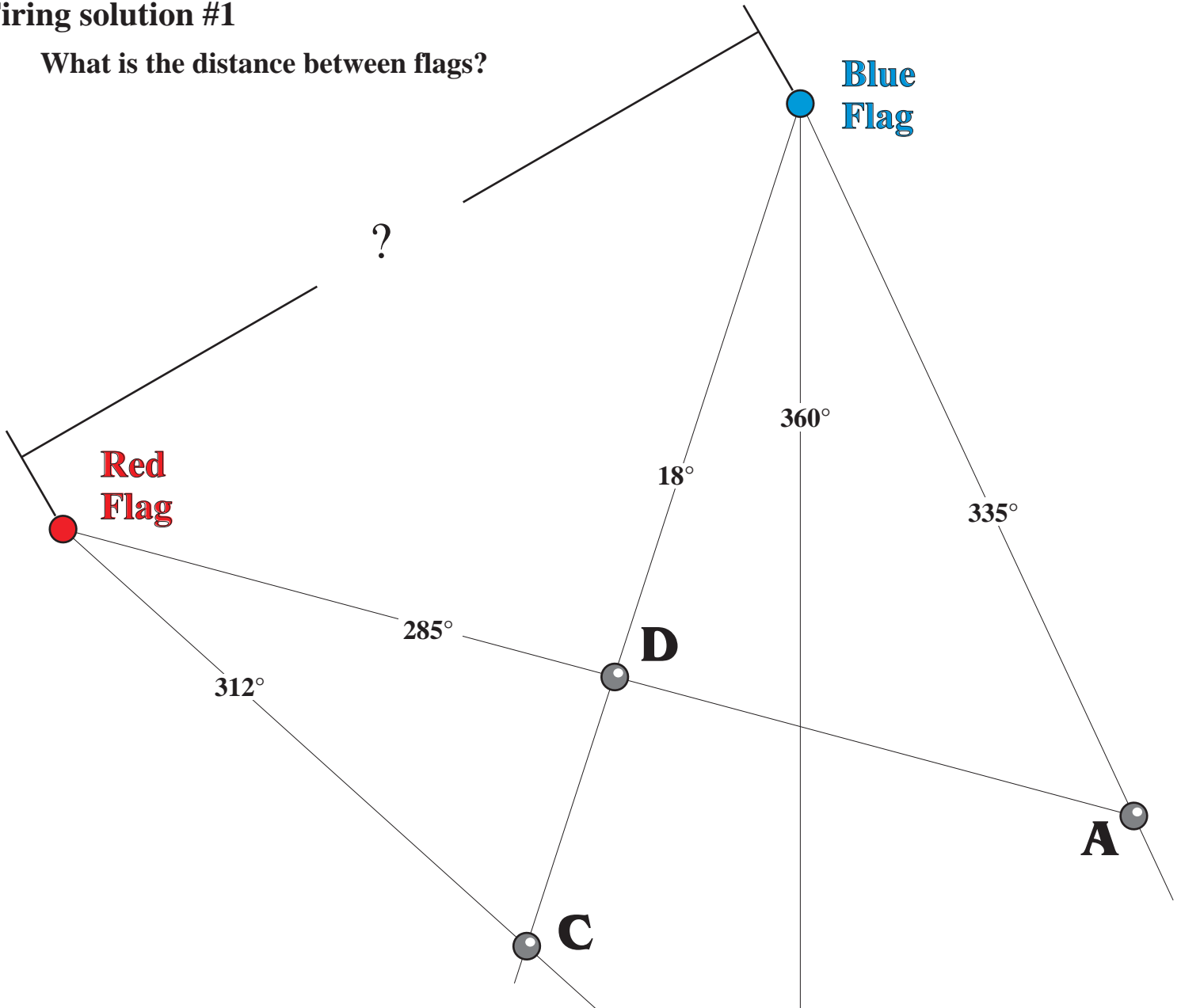


# Pacing exercise

## Firing solution #1

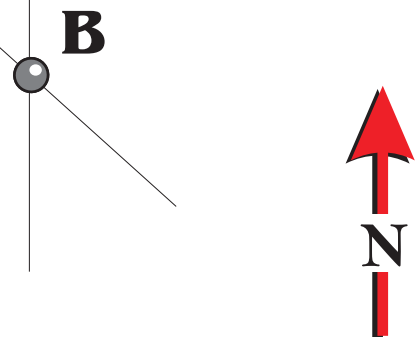
What is the distance between flags?

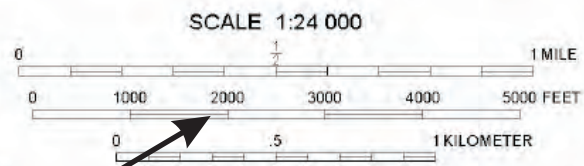
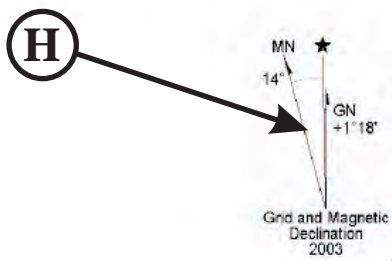
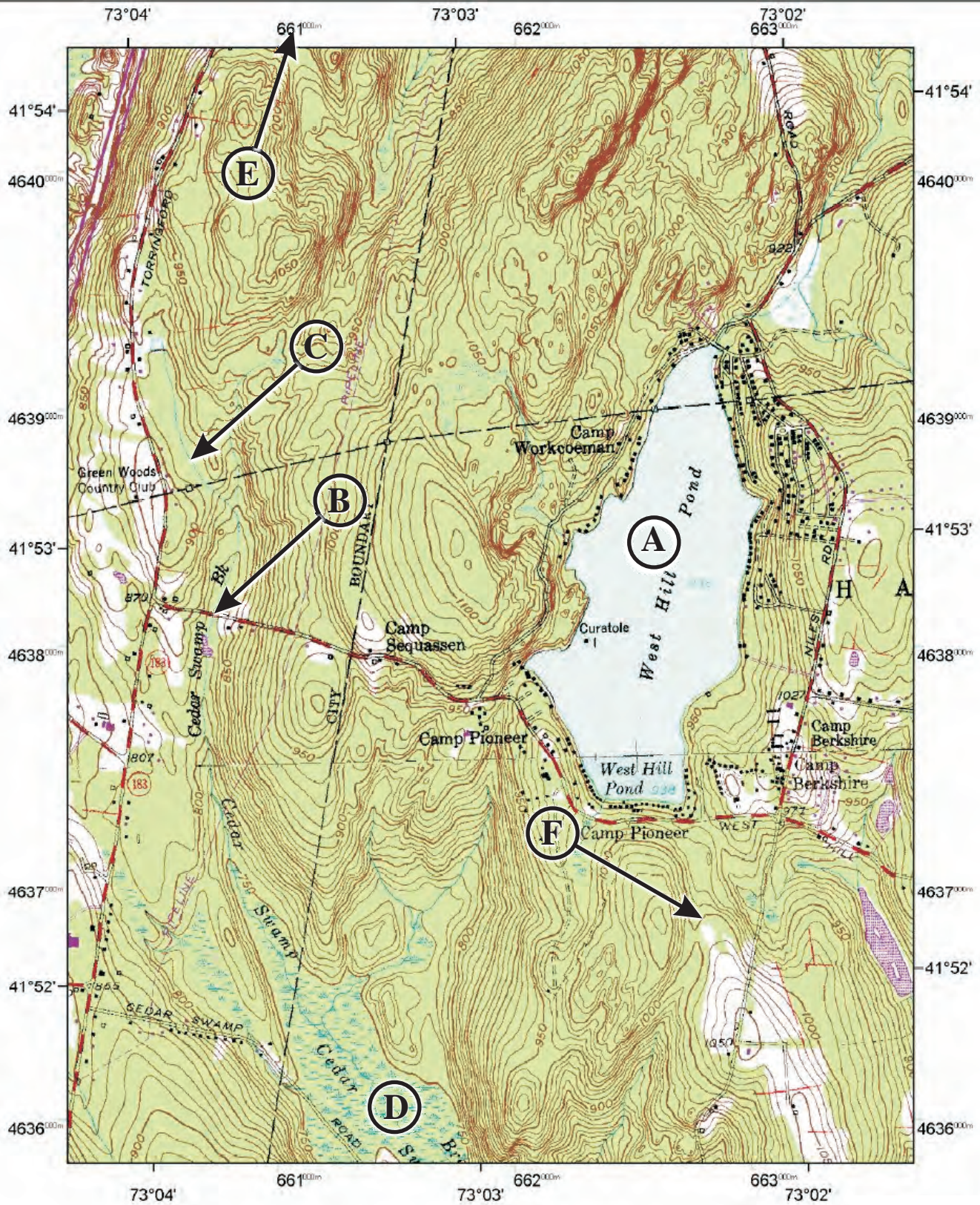


# Bearing shot exercise

## Firing solution #2

Which dot indicates the location of the stake?





center:  
41°52'51" / 73°02'56"

CONTOUR INTERVAL 10 FEET

**Station Code: C**

**Firing solution 3:**

**Which knot is two half hitches?**

**Station Code: A**

**Firing solution 6:**

**What is the sixth point of the Scout Law?**

**A-Kind**

**B-Thrifty**

**C-Courteous**

**D-Obedient**

## **Station Code: B**

**Firing solutions 8 & 9:**

**Identify the markers on the map that point to . . .**

- The Scale**
- A Contour Line**

## **Station Code: D**

**Firing solutions 8 & 9:**

**Identify the markers on the map that point to . . .**

- A road**
- The magnetic declination indicator**

**Station Code: D**

**Firing solution 3:**

**Which knot is a clove hitch?**

**Station Code: D**

**Firing solution 6:**

**What is the ninth point of the Scout Law?**

**A-Kind**

**B-Thrifty**

**C-Courteous**

**D-Obedient**